

How to use GPSDump to upload waypoints to your GPS

STEP 1

GPSDump ver. 4.25 was used for this tutorial. After you've downloaded the waypoints off the league website to your hard drive, open up the GPSDump application. Open "File" from the menu bar and select "Open wpts."

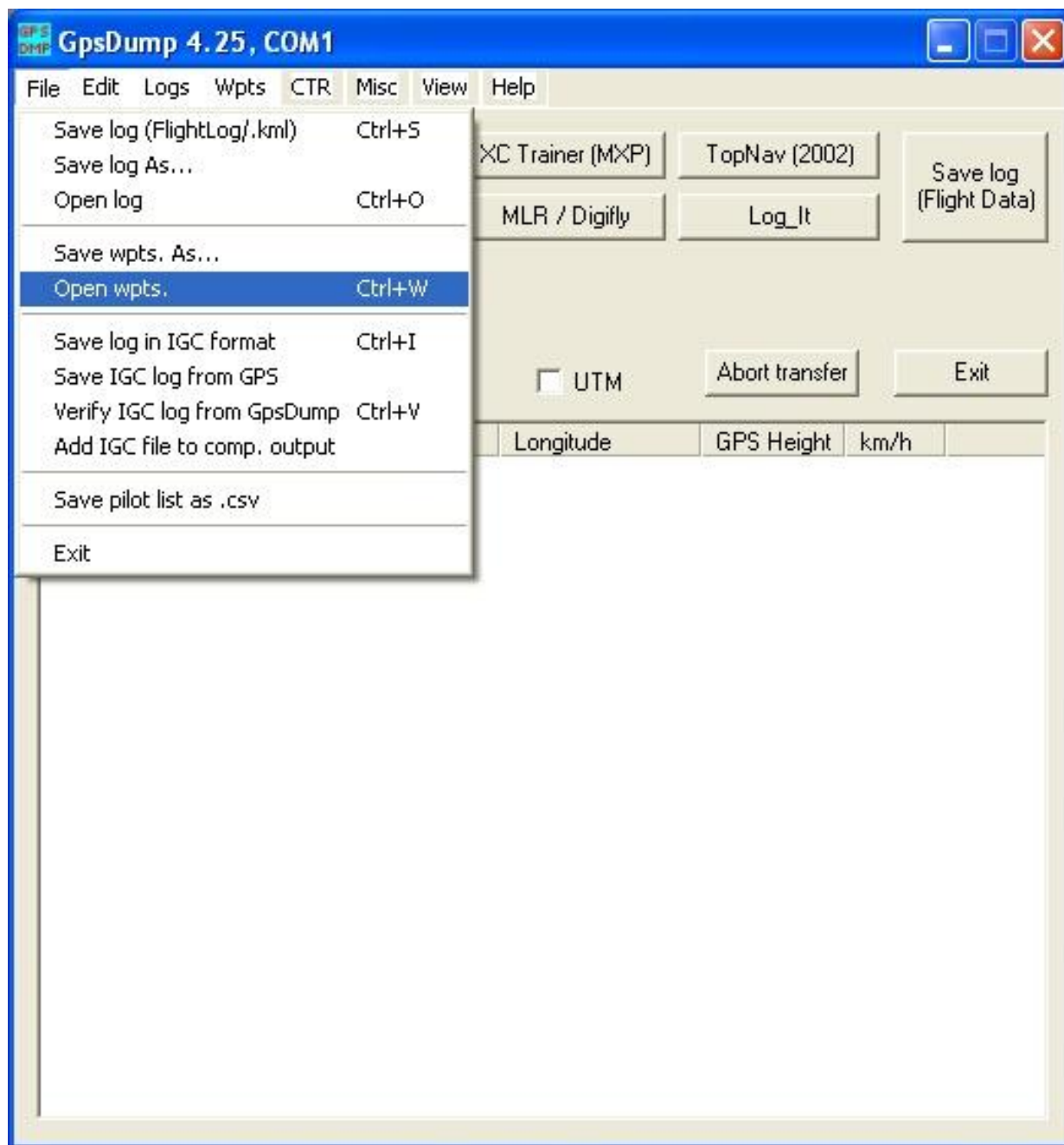


Figure 1

STEP 2

Find the waypoint file that you downloaded to your hard drive and open it up.

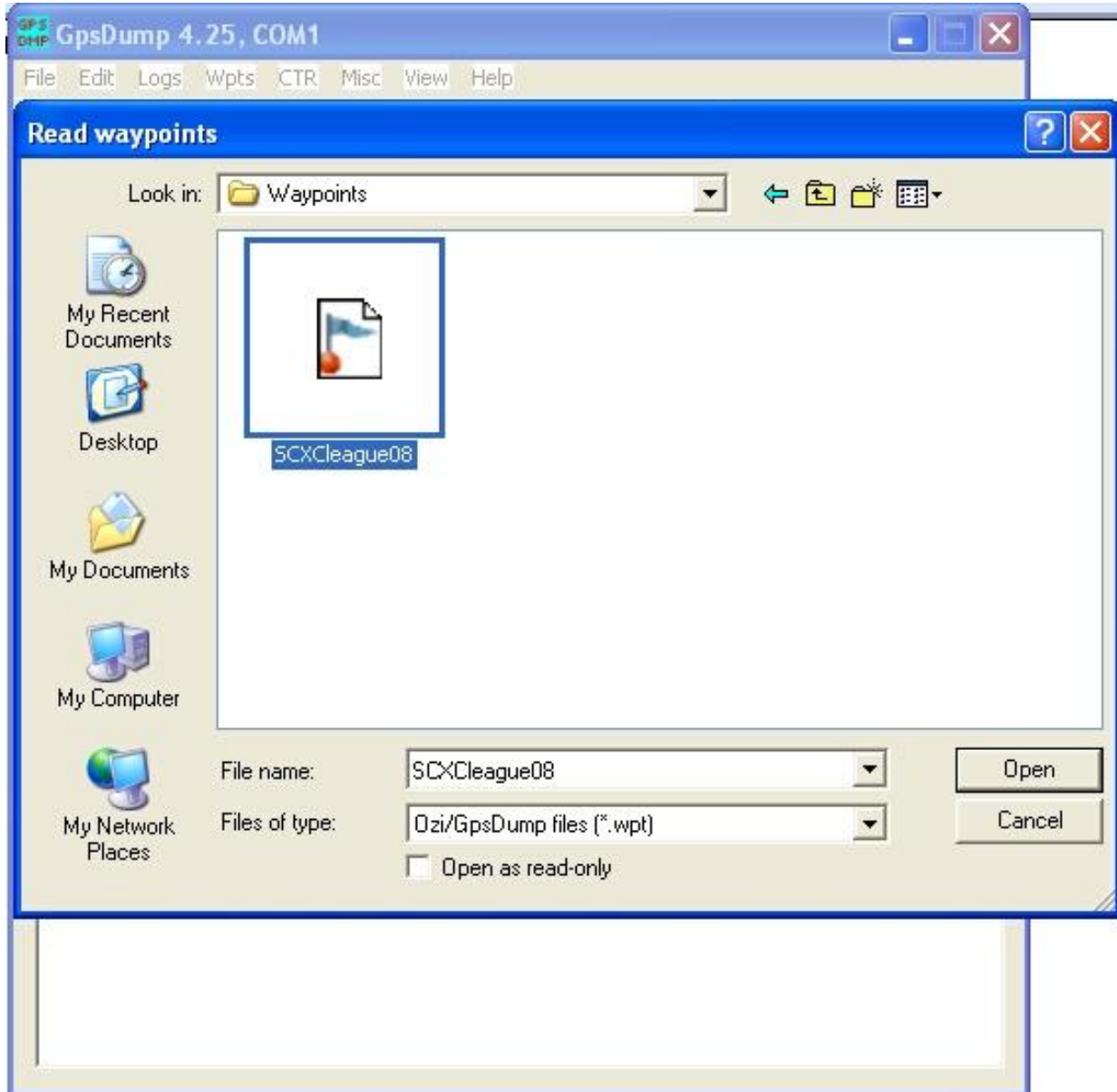


Figure 2

STEP 3

All the waypoints will be displayed in the main window. Highlight the entire left hand "ID" column. You can do this by clicking on the left hand column and pressing the Ctrl + A keys together, or by clicking on the left hand column (from the very top of the list) and pressing the Shift key + down arrow keys to highlight the entire list. Scroll up and down to make sure the entire column is highlighted. Now go to the menu bar and open the "Wpts" drop down menu. From the list, select the type of GPS you're sending to and click on it.

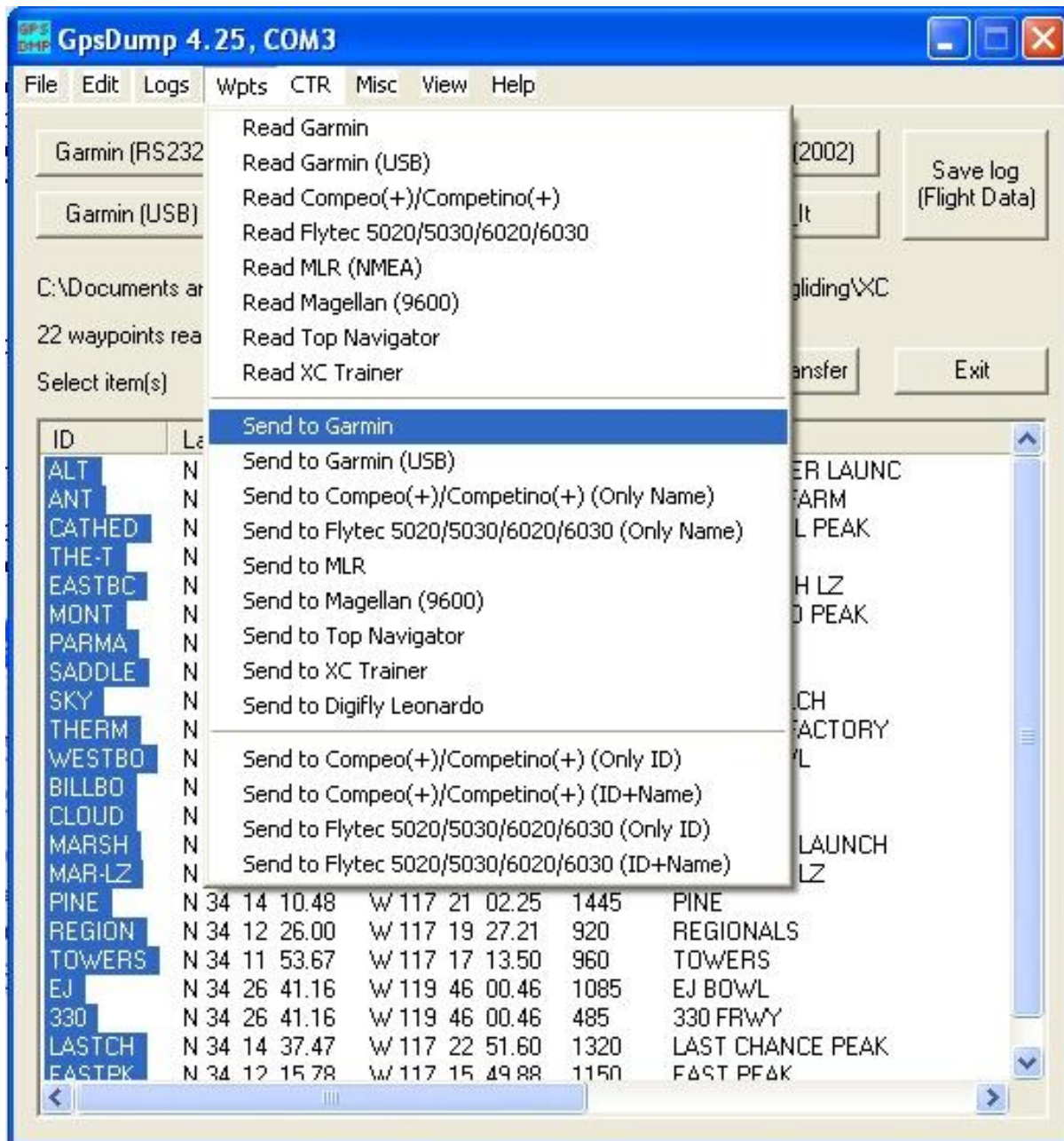


Figure 3

Potential Problems

If you get an error message while trying to send waypoints to the GPS, either the GPS unit isn't on or you are using the wrong COM port. If the GPS is on then go to the menu bar and click on "Misc – Set COM port" and select a different port. Repeat this until you've found the correct port that enables you to upload the waypoints.

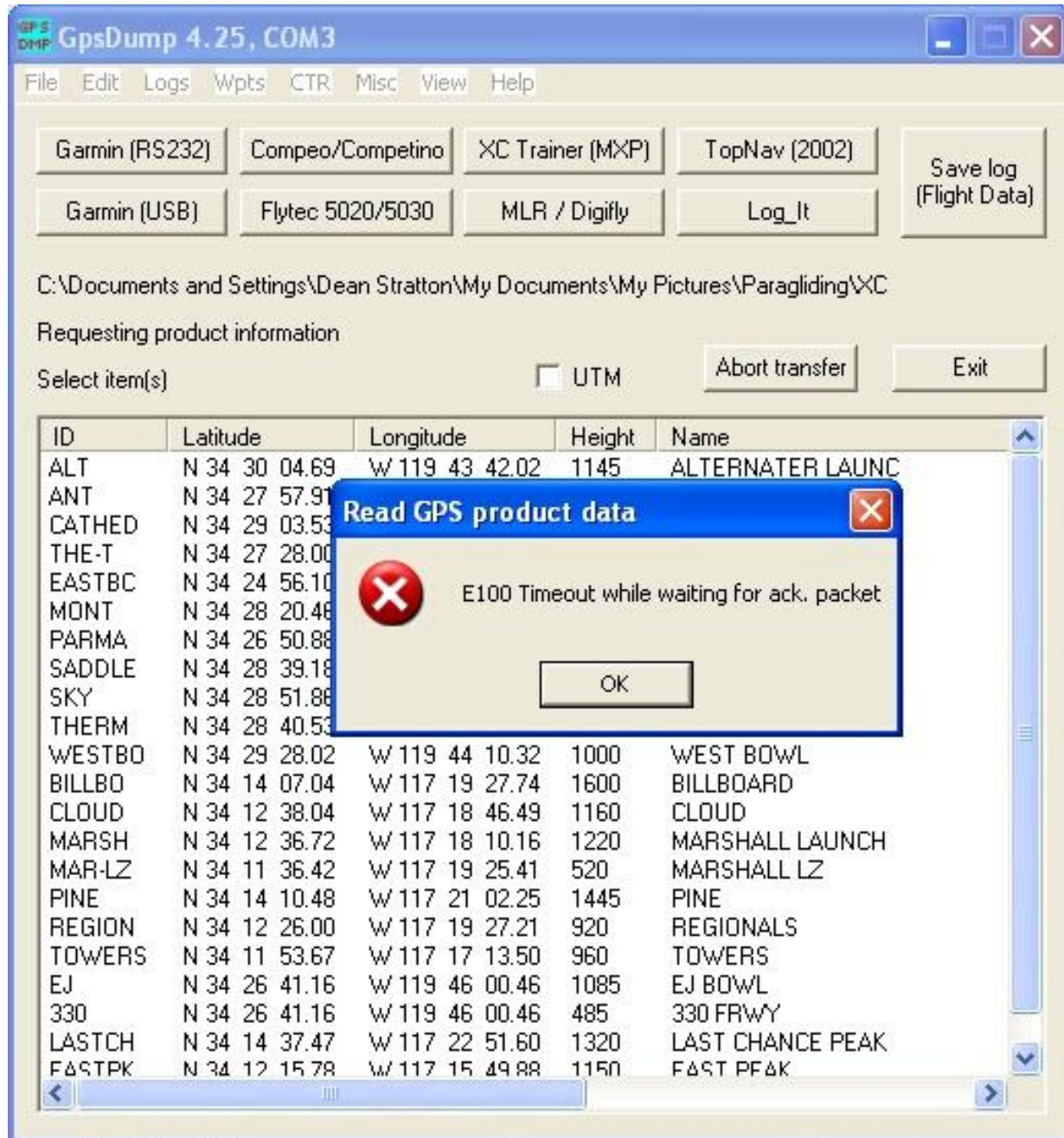


Figure 4

STEP 4

Assuming the com port was correct the waypoints will be uploaded to the GPS. If the waypoints upload successfully you will see a message above the main window stating how many waypoints were sent. Note the example below "Waypoint 22 of 22 sent". Before you close out GPSDump, check your GPS to make sure all the waypoints downloaded correctly. If everything uploaded to your GPS correctly then you're done and you can close out the application

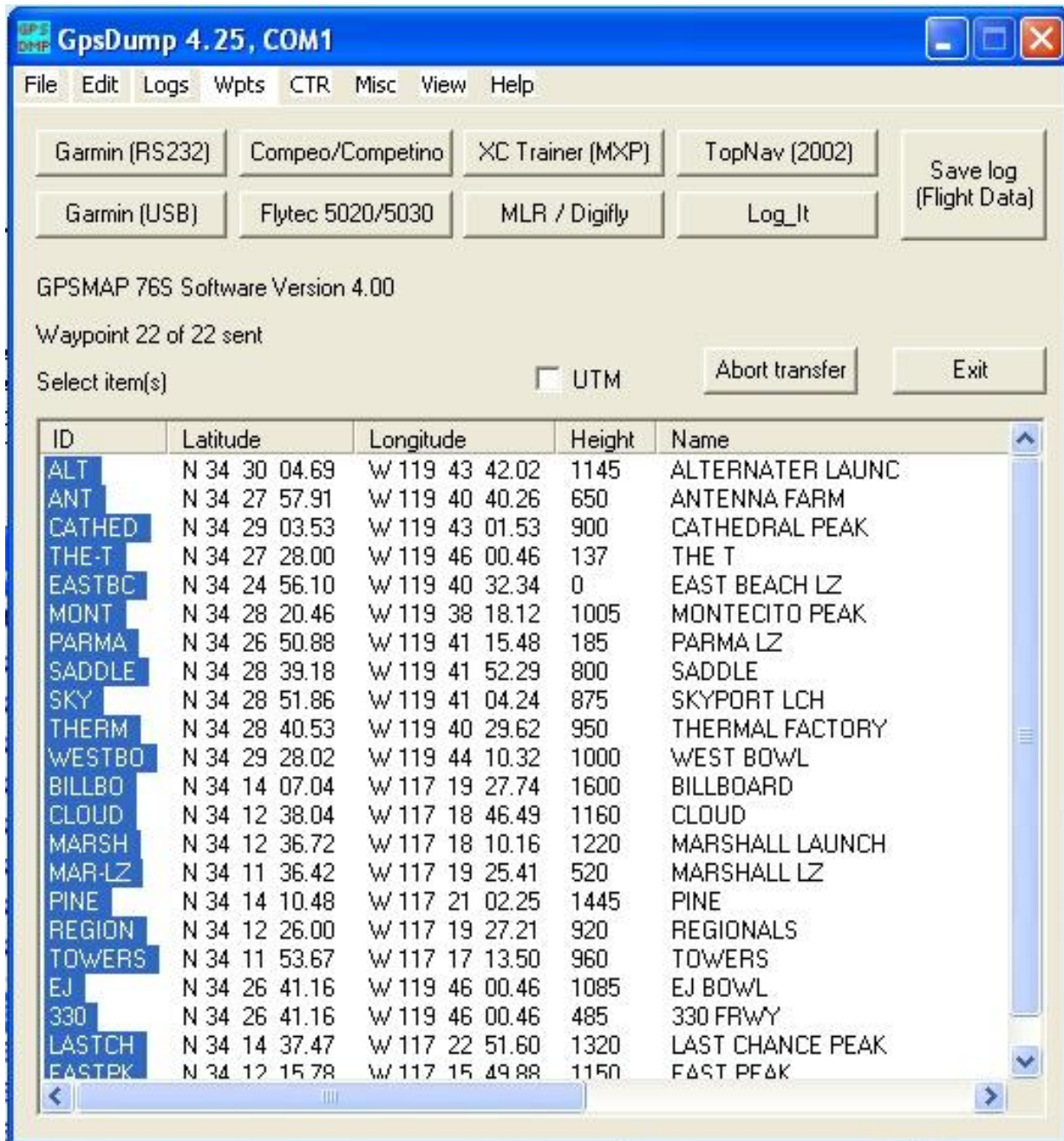


Figure 5